



GOODWILL

OF DELAWARE AND DELAWARE COUNTY

ReThink Fashion Show

THE

ECO EDIT

Thursday, August 22, 2024

Goodwill Recycling Center & Outlet
New Castle, DE





GOODWILL
OF DELAWARE AND DELAWARE COUNTY

ReThink Fashion Show

THE
ECO EDIT

Event Schedule

5:00 - 6:20 pm Art and Fashion Showcase

Presented by Students from the
University of Delaware Department
of Art & Design and Department of
Fashion & Apparel Studies

Curated Goodwill Shopping Experience

Raffle Ticket Sales

Networking Cocktail Reception
by Caffe Gelato

6:20 pm Door Prize Announcements

6:30 pm Welcome Remarks

Colleen Morrone
President & CEO, Goodwill of
Delaware and Delaware County

Introduction of Miss Earth USA,
Beatrice Millan-Windorski

6:40 pm Runway Show

7:00 pm Closing Remarks &
Raffle Announcements
Shop Looks from
the Runway!



GOODWILL Connect

powered by Goodwill of Delaware & Delaware County

Connect...

to land a great job
to develop job skills
to locate essential services
to explore the possibilities!

Available now in Goodwill
stores throughout New Castle County.



Coming soon to Kent and
Sussex Counties.



Employment



Opportunities



Support



Training

In partnership with: **Delaware WORKS**
DELAWARE WORKFORCE DEVELOPMENT BOARD

DELAWARE DEPARTMENT OF LABOR

2-1-1
Delaware

United Way
Delaware
United Way of Delaware

For more information visit www.GoodwillDE.org/GoodwillConnect

THANK YOU

SPONSORS & PARTNERS

ReFashion Revolutionist Sponsors

DelawareToday

Elija Mars
THE BRANDING ARCHITECTS

Sustainable Style Trailblazer Sponsors

Caffé Gelato
RESTAURANT
+ CATERING

D | Fashion
ALLIANCE

Mintz Beauty Bar

Conscious Couture Ambassador Sponsors



Fashion for Good Sponsor

Wegmans

Event Partners



DEPARTMENT OF FASHION & APPAREL STUDIES
DEPARTMENT OF ART & DESIGN

ReSpool

textile-to-fiber
fashion waste
recycling

Sustainability



Thank you for joining us for the ReThink Fashion Show - the Eco Edit!

At Goodwill, sustainability is at the core of our mission. We strive to transform unsold goods into valuable raw materials for new products. Whether it's converting glass into sand, plastic film into luxury outdoor decking, or shredding hard plastic for everyday use products, we are committed to reducing waste and promoting a circular economy. Our efforts also extend to repurposing clothing into new fabrics, insulation, and more.

If you're passionate about sustainability and want to make a difference, consider becoming a sustainability partner with Goodwill. Together, we can create a more sustainable future.

CONTACT US MISSION@GOODWILLDE.ORG TO LEARN MORE ABOUT HOW YOU CAN GET INVOLVED.

Thank you to our sustainability partners!





Special Thanks to our
Community Impact Committee
of the Board of Directors, and to
all of our Board Members!

Community Impact Committee

Board Chair
Chaney Hall
Fox Rothschild, LLP

Chair, Community Impact Committee
Logan S. Herring, Sr.
The WRK Group

Steve Blewitt
AssuredPartners Delaware

Douglas Clark
The Mallett Group

Dwayne M. Redd
State Farm Insurance Company

Kalimah White
Key Private Bank

Board of Directors

Board Chair
Chaney Hall
Fox Rothschild, LLP

Vice Chair
Kalimah White
Key Private Bank

Vice Chair
Kyle McLaughlin
J.C. Bar Properties, Inc.

Treasurer
Tish Anshen
Retired

Secretary
Jeffrey T. Kaczmarczyk, II
Blue Rock Financial Group

President & CEO
Colleen Morrone
Goodwill of Delaware
and Delaware County

Steve Blewitt
AssuredPartners Delaware

Douglas Clark
The Mallett Group

Markevis Gideon
NERDiT NOW

Logan S. Herring, Sr.
The WRK Group

Christopher R. Howland
U.S. Attorney's Office for the
District of Columbia

Bonnie R. Rambo
Retired

Dwayne M. Redd
State Farm Insurance Company

Lauren E. M. Russell
Potter Anderson & Corroon LLC



Message from

Chaney Hall
Board Chair,
Goodwill of Delaware &
Delaware County

&

Colleen Morrone
President & CEO,
Goodwill of Delaware &
Delaware County

Welcome to Goodwill of Delaware & Delaware County's inaugural ReThink Fashion Show - the ECO Edit!

This event showcases art and fashions upcycled using textiles from Goodwill's recycling center, created by students in the University of Delaware's Departments of Fashion & Apparel Studies and Art & Design.

Along with upcycled runway fashions, this evening you'll also see everyday styles sourced from our stores - showing you how one of a kind, fashion forward outfits can be created from gently-used Goodwill finds.

And finally, tonight we're also bringing awareness to our sustainability initiatives with textiles, plastic bags, glass and hard plastics.

Your involvement with Goodwill as a donor of gently-used items, as a shopper, event attendee, or volunteer empowers people who are working to overcome barriers to self-sufficiency, providing them with the skills and opportunities they need for a brighter future.

Thank you for being here with us to celebrate sustainability and the *Power of Work!*

Enjoy the program!

Chaney Hall Colleen Morrone

Thank you

ReThink Fashion Show

Stylists

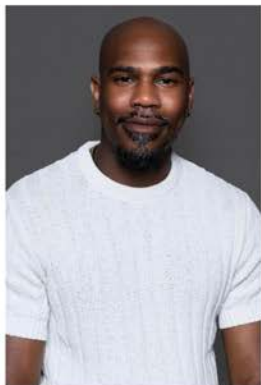


Tia Couture



@tiacouture

Tia is a personal stylist and wardrobe curator with a passion for timeless fashion. She brings a unique perspective to the fashion industry by incorporating her love of thrifting and vintage clothing into the looks that she creates. With a background in fashion design and experience as a vintage boutique owner, personal shopper, and costume designer, Tia helps clients create wardrobes that empower them to embrace their personal style, inspire confidence, and live life to the fullest.



Akin Bethea



@akin.jbethea

Akin Bethea, the owner and creator of ANiQ Styles, envisions the brand as a catalyst for transformative experiences for all clients. With a strong focus on building self-confidence through strategic branding and image development, Akin offers expert personal styling services. His work has been featured in *Delaware Today*, and he has served as the Assistant Lead Stylist for Philadelphia Fashion Week 2023, as well as a guest judge for the Harcum College 2023 Fashion Show. Akin is committed to fostering lasting partnerships and ensuring that each client's unique vision is valued and reflected in their personal style, guaranteeing satisfaction with every transformation.



Sienna Nelson



@siennashley_

Sienna specializes in denim curation and style consulting. While focusing on creating timeless pieces and wardrobes, her niche is styling the Everyday Girl.

Remember, it's in you not on you.

Thank you

Student Designers



DEPARTMENT OF FASHION & APPAREL STUDIES

Known for its rigorous programs and award-winning scholars, the University of Delaware Department of Fashion & Apparel Studies is a leader in integrating cutting-edge technology, global experiences, and industry relations into its curriculum. Their students' remarkable talent shines through in the upcycled designs they've created for the ReThink Fashion Show runway, showcasing the innovative future of fashion. We're thrilled to witness how the department's commitment to experiential learning and professional success is articulated in their students' creations.



Kelly Cobb

Associate Professor, Department
of Fashion & Apparel Studies



@applied_materiality



Alexandra Arroyo



@alexx.arroyo

Alexandra Damonte



@i.am.damonte



Casey Tyler



@kaseycoi

Michelle Yatvitskiy



@may.flower.designs

Orlagh Cahill



@_orlaghcahill

Saynani Gbason-Krah



@minuitnana

Zach Pilla

Furniture
Vignettes

Carly Dixey



@coachhouseofmiddletown

Thank you for
joining us on the

Runway!



Miss Delaware USA 2024
Alysa Bainbridge



Ms. Voluptuous Delaware 2024
Aisha Monroe



Miss New Castle USA 2024
Kelly Smith



Miss Earth USA 2024
Beatrice Millan-Windorski

MODELS

Vivian Adderley

Sierra Anderson

Makela Branch

Jessica Carrington

Felicia Gaus-Woolen

Gulnur Kukenova

Emory Marshall

Sophie Phillips

Kaylynn Pride

Tyran Rice Jr.

Charnita Scott

Cherish Smith

Kelly Smith

Kyla Tiara

Roxanne Williams

Tysheen



Web Design Brand Architecture Creative Operations



ELIJA MARS

The agency is dedicated to using its creative expertise to make a positive impact, with a mission to give back to the community through innovative and meaningful creative projects. Whether through compelling visuals or strategic creative solutions, Elija Mars seeks to inspire and uplift by contributing to the greater good.

302.654.2498

jeremy@accuratetint.com

1010 N. Union St, Suite D, Wilmington, DE 19805



Proud Sponsor and Partner to
Goodwill of Delaware and Delaware County

SIGNS, BANNERS, POSTERS, TRADESHOW
BROCHURES, CARDS, ENVELOPES, BOOKS
DECAL GRAPHICS, WRAPS, DESIGN & MORE!

MENTION CODE
#24RTFG FOR
20% DISCOUNT
ON YOUR ORDER

*ONE-TIME USE PER CLIENT/ACCOUNT



COMMERCIAL, RESIDENTIAL AND AUTO
WINDOW TINT (SOLAR/SECURITY/PRIVACY/DECORATIVE)

Family Operated | Minority/Women/Veteran Owned | Certified & Accredited Professionals



GOODWILL
OF DELAWARE AND DELAWARE COUNTY

Do You or Someone You Know

**NEED HELP
FINIDING A JOB?**

Goodwill can help!



For immediate
employment
opportunities contact



For training opportunities,
help with your resume, job
search or more, contact

GoodwillStaffingServices@GoodwillDE.org
302-504-5727

Mission@GoodwillDE.org
(302) 761-4640

- United States Apparel Market Revenue 2024: \$358 Billion-
-The apparel and manufacturing industry employs 100,000+ people in the United States-

Growing fashion and freedom pays, and
Delaware Fashion Alliance has the plan

delawarefashionalliance@gmail.com

defashionalliance.org



ACOUSTIC VISION, LLC

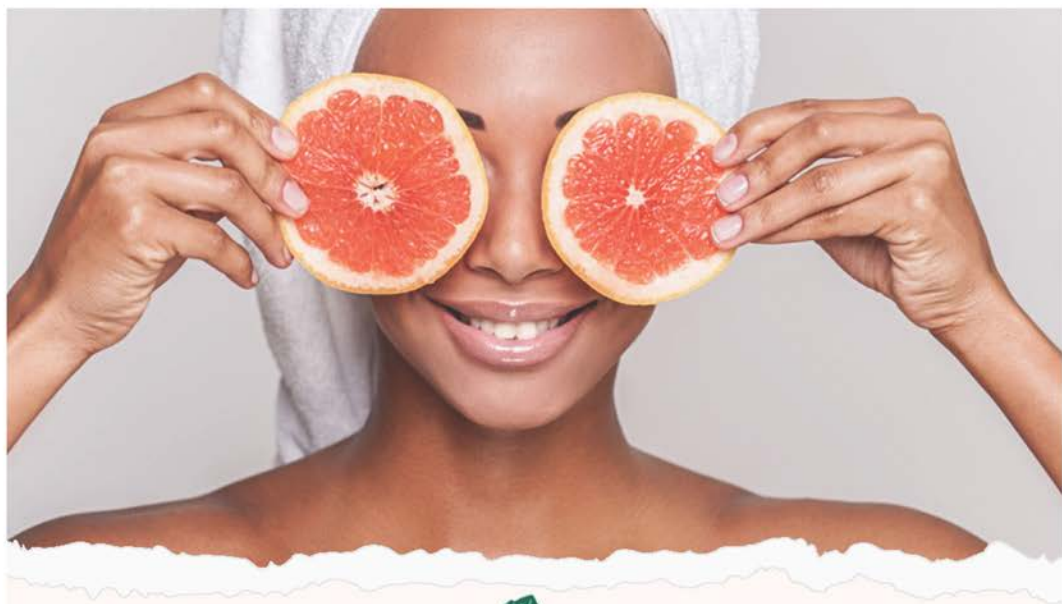
A HARMONY OF SIGHT AND SOUND



Minority and veteran-owned full-service event production
serving DE, PA, NJ and beyond.

Small or large, we make your event vision a reality!

Acoustic Vision, LLC
302-209-1554 | INFO@ACOUSTICVISION.NET | WWW.ACOUSTICVISION.NET



Mintz Beauty Bar

DISCOVER AND ENHANCE YOUR NATURAL BEAUTY

BODY SCULPTING
FULL BODY WAXING
HENNA BROWS
MAKE-UP ARTISTY

TEETH WHITENING
LASH EXTENSIONS
SIGNATURE FACIAL
HAIR BRAIDING



17 WOOD ST UNIT 51 MIDDLETOWN DE 19709

302-566-7370

WWW.MINTZBEAUTYBAR.COM



WILMINGTON

UNIVERSITY™

is a proud sponsor of the
**Goodwill of Delaware
and Delaware County
Inspiration Awards Luncheon**

wilmu.edu